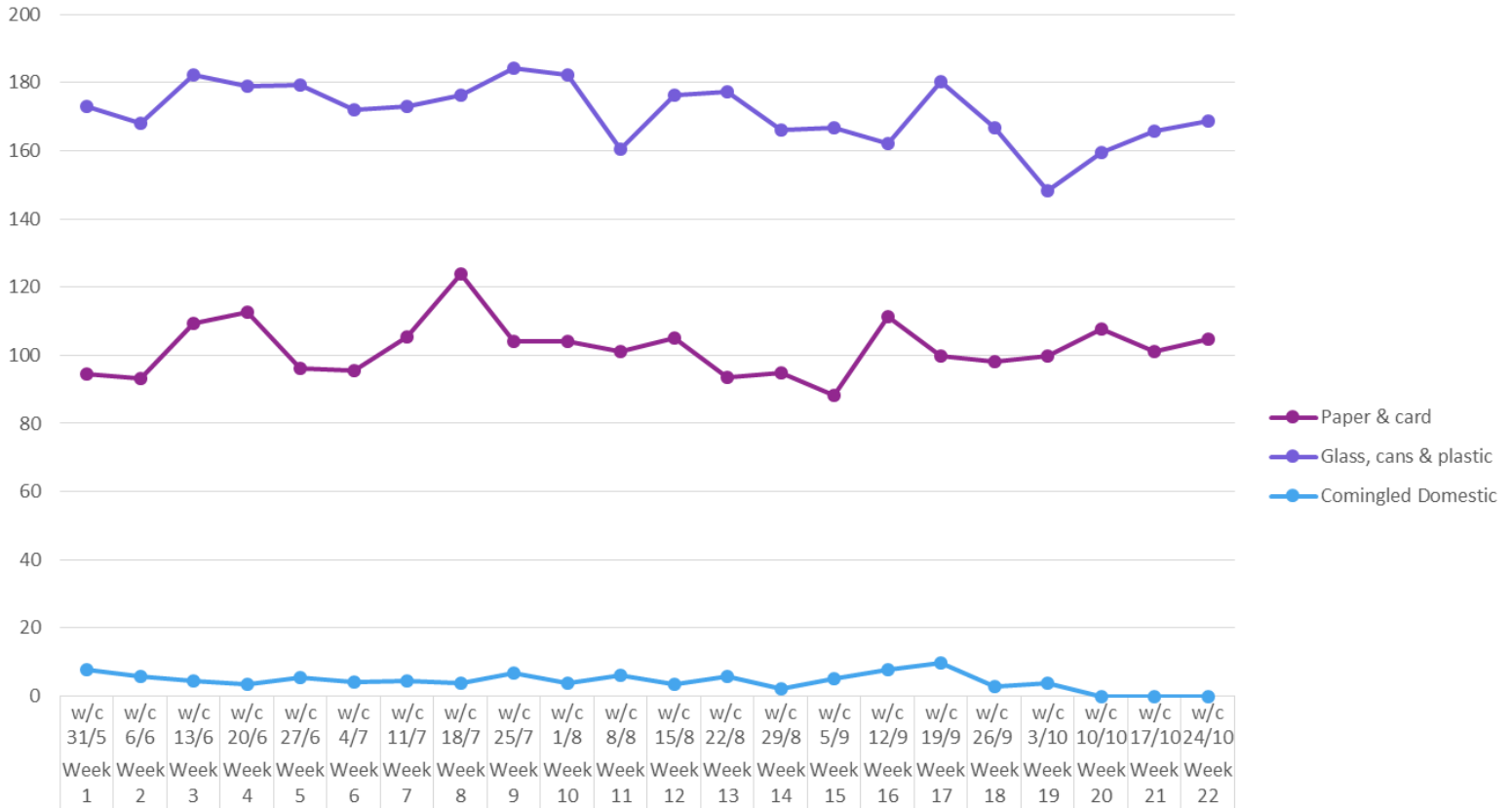


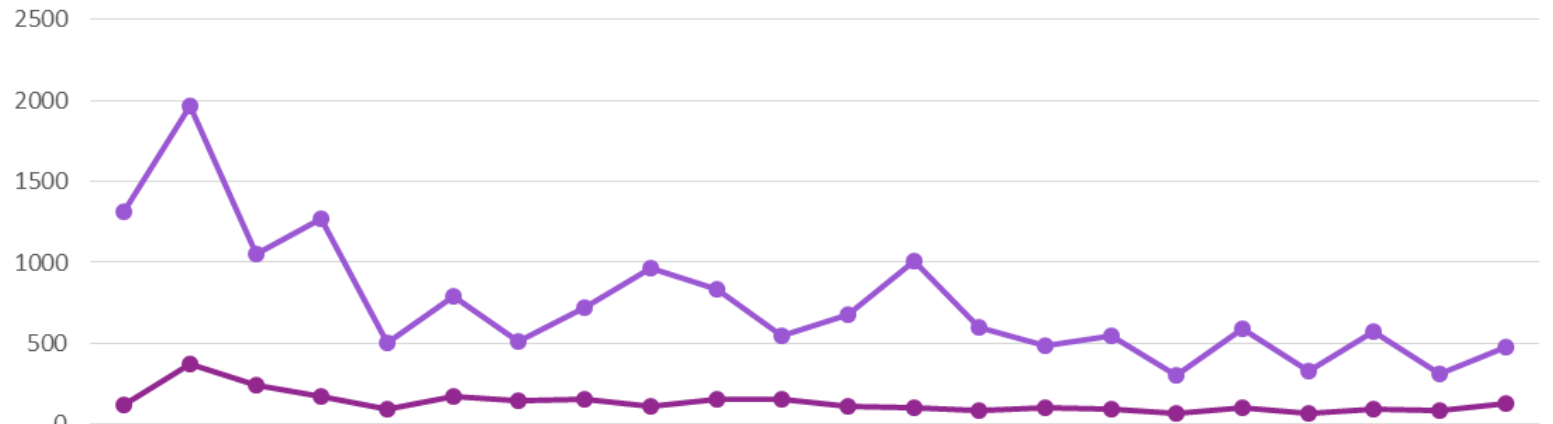
APPENDIX A - JOINT WASTE PERFORMANCE DATA

Joint Waste Service Dual Stream Recycling Tonnage per week



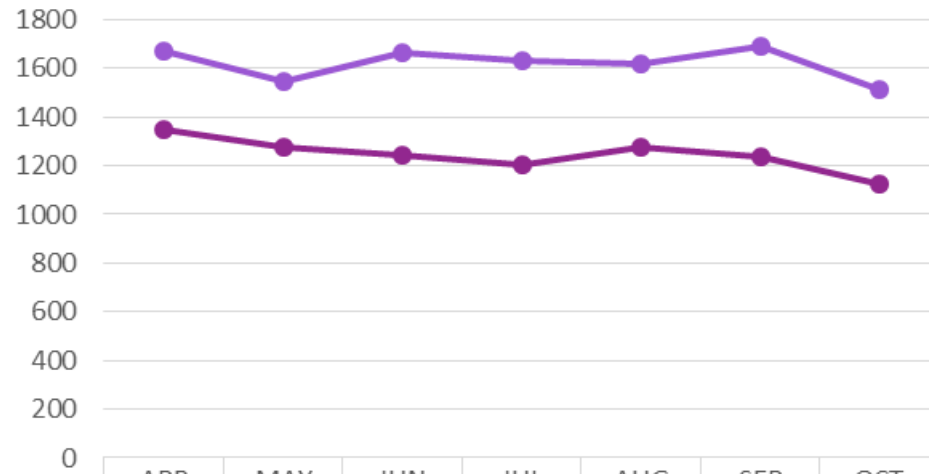
Paper & card	94.5	93.12	109.2	112.5	96.18	95.4	105.5	124	104	104	101	105.2	93.36	94.68	88.12	111.2	99.82	98.04	99.83	107.7	101.1	104.9
Glass, cans & plastic	173.1	168.2	182.1	179	179.2	171.9	172.9	176.4	184.4	182.4	160.3	176.2	177.2	165.9	166.7	162.2	180.3	166.9	148.3	159.3	165.7	168.7
Comingled Domestic	7.72	5.64	4.62	3.56	5.62	4.24	4.5	3.7	6.78	3.96	6.224	3.62	5.78	2.32	5.24	7.78	9.82	2.98	3.82	0	0	0

Joint Waste Service Missed Bins and Contaminated Recycling Bins per week



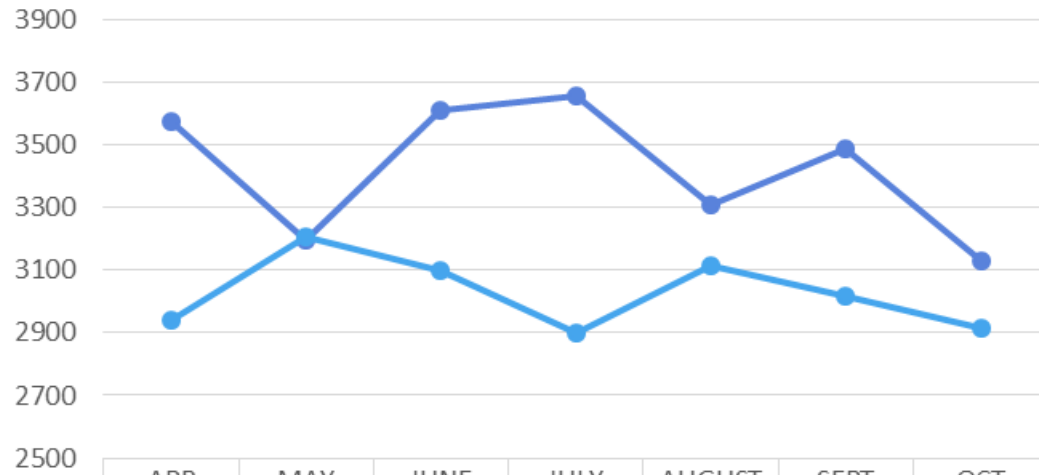
	Week 1	Week 2	Week 3	Week 4	Week 5	Week 6	Week 7	Week 8	Week 9	Week 10	Week 11	Week 12	Week 13	Week 14	Week 15	Week 16	Week 17	Week 18	Week 19	Week 20	Week 21	Week 22
Missed Bins	120	375	239	171	92	174	147	155	113	154	155	112	102	82	100	91	70	106	66	92	89	132
Contaminated recycling bins	1317	1963	1054	1272	501	790	509	725	969	838	549	679	1005	596	488	546	304	587	326	576	312	476

Joint Waste Recycling and Refuse Apr-Oct 22



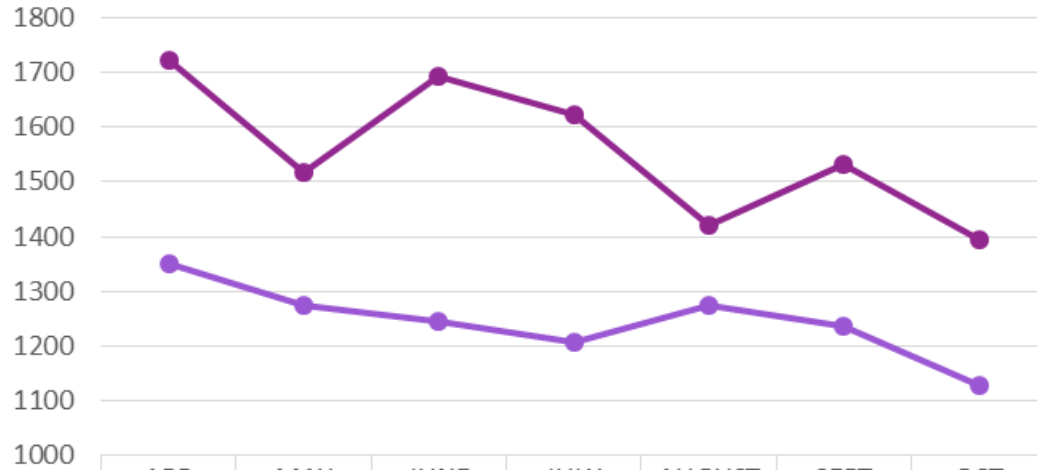
	APR	MAY	JUN	JUL	AUG	SEP	OCT
● Total Recycling	1349.78	1274.04	1244.72	1205.79	1276.232	1237.96	1127.83
● Residual	1673.68	1548.89	1666.73	1631.91	1617.09	1687.89	1511.56

Joint Waste Service Residual Tonnage Difference



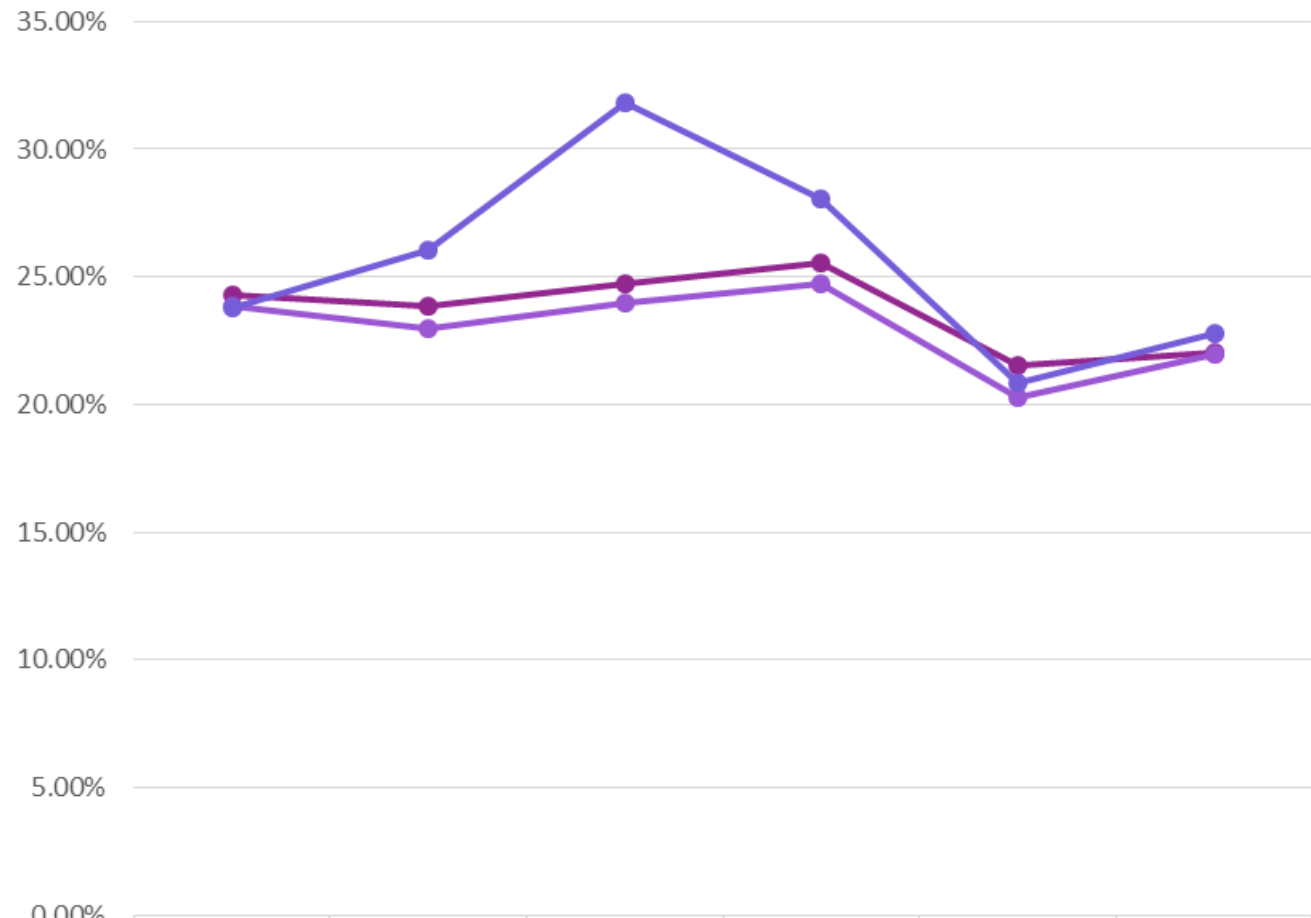
	APR	MAY	JUNE	JULY	AUGUST	SEPT	OCT
21/22	3574.74	3198.16	3609.63	3657.2	3307.15	3487.31	3131.26
22/23	2939.30	3204.29	3098.46	2897.62	3114.02	3018.84	2915.64

Joint Waste Service Recycling Tonnage Difference



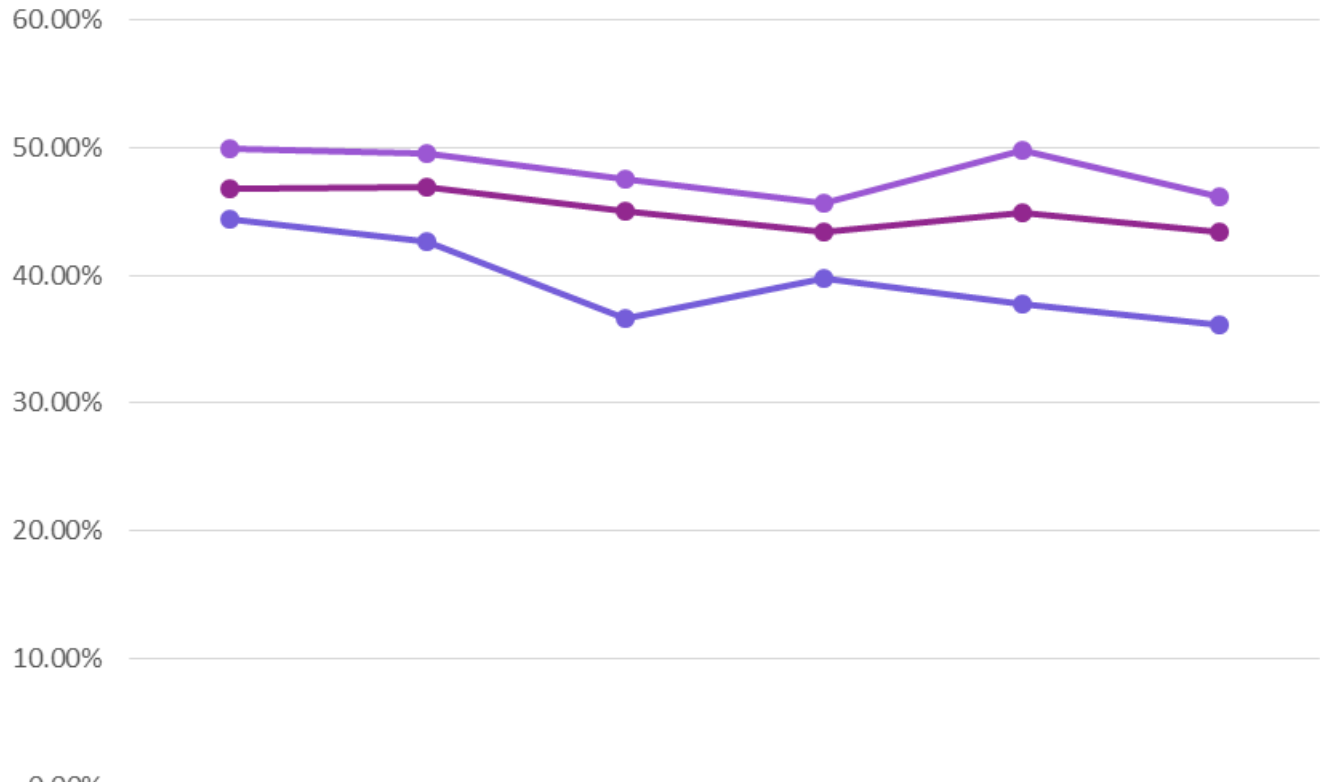
	APR	MAY	JUNE	JULY	AUGUST	SEPT	OCT
21/22	1722.41	1515.94	1690.97	1623.35	1421.21	1531.6	1392.78
22/23	1349.78	1274.04	1244.72	1205.79	1275.47	1235.3	1127.86

Joint Waste Service % Dry Recycling



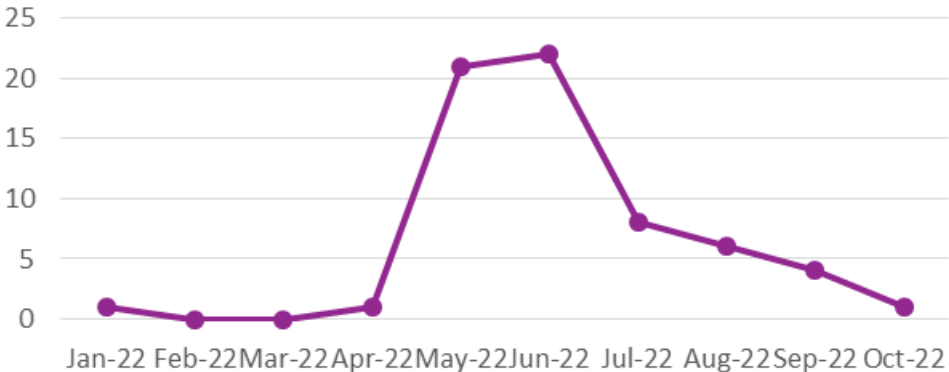
	qu1 21/22	qu2 21/22	qu3 21/22	qu4 21/22	qu1 22/23	qu2 22/23
Joint Waste+Comparisons!\$C\$41	24.28%	23.84%	24.71%	25.56%	21.55%	22.01%
Lichfield	23.83%	22.95%	23.96%	24.71%	20.29%	21.98%
Tamworth	23.77%	26.04%	31.82%	28.04%	20.84%	22.77%

Joint Waste Service Cumulative % Recycling



	qu1 21/22	qu2 21/22	qu3 21/22	qu4 21/22	qu1 22/23	qu2 22/23
Joint Waste	46.75%	46.87%	44.98%	43.40%	44.93%	43.36%
Lichfield	49.93%	49.52%	47.55%	45.64%	49.82%	46.16%
Tamworth	44.44%	42.61%	36.62%	39.75%	37.76%	36.18%

Joint Waste Service Complaints/Escalated Call Backs Logged on Pentana



	Jan-22	Feb-22	Mar-22	Apr-22	May-22	Jun-22	Jul-22	Aug-22	Sep-22	Oct-22
Complaints/escalated call backs	1	0	0	1	21	22	8	6	4	1